



CHALLENGER®



# FY-3220 series

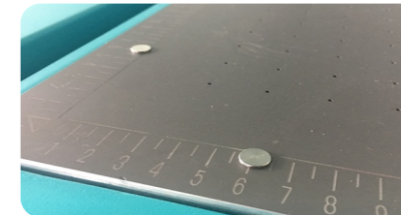
## 3.2M × 2.2M print width, UV Flatbed printer

### Vast world full of opportunities

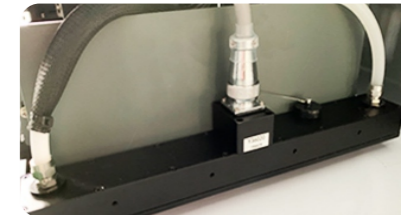
# FY-3220 series



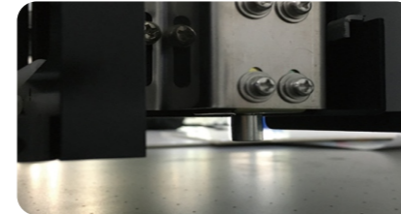
Linear motor for more accurate and stable moving on X axis (Optional)



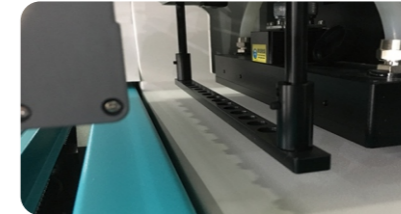
Round positioning pin for accurate edge printing to minimize waste of material.



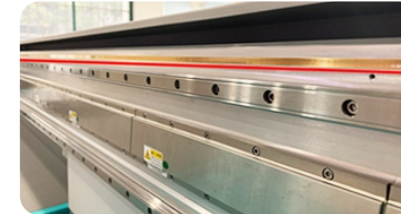
LED water-cooling curing system, which is more convenient in use and better in curing, with longer service life, less energy consumption and more environmentally friendly.



Automatic carriage height set with media thickness detector.



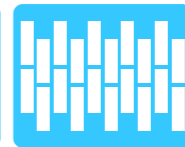
New generation of Crash-Sensor System can effectively protect print head from physical damage during the printing.



Metallic Optical Encoder Scale, which is oil resistant, stable in moving with ease of maintenance and accuracy of reading.

### Printhead Options

SPT1024GS  
CE4M  
G5 / G6



SPT 1024GS

CE4M

G5 / G6

### Technical Specifications

Model	FY-3220G				FY-3220R				
Printhead	SPT 1024GS				G6				
Print width	3200mm x 2000mm								
Printhead configuration	one-row 4 heads @ 4 colors	two-row 8 heads @ 4 colors	3-row 12 heads @ 4 colors	4-row 16 heads @ 4 colors	one-row 2 heads @ 4 colors	two-row 4 heads @ 4 colors	3-row 6 heads @ 4 colors	4-row 8 heads @ 4 colors	
Print Speed *	4PASS	25.2m <sup>2</sup> /h	46.6m <sup>2</sup> /h	67m <sup>2</sup> /h	88m <sup>2</sup> /h	21m <sup>2</sup> /h	46m <sup>2</sup> /h	64.8m <sup>2</sup> /h	83.3m <sup>2</sup> /h
	6PASS	17.3m <sup>2</sup> /h	32.4m <sup>2</sup> /h	48m <sup>2</sup> /h	63m <sup>2</sup> /h	15m <sup>2</sup> /h	26.8m <sup>2</sup> /h	43.1m <sup>2</sup> /h	51.8m <sup>2</sup> /h
	8PASS	13m <sup>2</sup> /h	24m <sup>2</sup> /h	38m <sup>2</sup> /h	50m <sup>2</sup> /h	11m <sup>2</sup> /h	23m <sup>2</sup> /h	32m <sup>2</sup> /h	43m <sup>2</sup> /h

Weight & Thickness: 75KG/m<sup>2</sup>, Max.100mm

Type: wood, densiyboard, glass, metal, sheet, chevron board, PVC, Acrylic plate, ceramic tiles...

Ink: UV Curable Ink

Ink supply system: Negative pressure ink supply

Curing method: LED water-cooling curing

RIP: United Fancy

Print Interface: USB 3.0

Printer: AC220V 50HZ 1000W

Print Platform Vacuum Hold Down Area: AC220V 50HZ 4000W

Operation Environment: Temperature 20°C-28°C Humidity 40%-60%

Printer Dimensions: L5553mm×W3050mm×H1428mm

Package Size: L5700mm×W3120mm×H1680mm  
(40' Flat Rack Container is required for shipping)

1. The speed data are taken from the printer at high speed, a difference of 10% may occur when running with different computers.  
2. Product specifications are subject to change without notice in advance. Color and shape in picture are for reference, computer and monitor not included. All rights reserved!



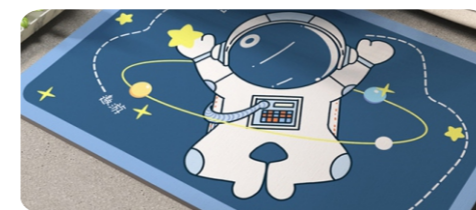
Advertising industry



Labelling Printing



Cosmetics Items



Interior



Daily Commodities



Cosmetics