

## 4KX2K 4 to 2 HDMI matrix User Manual

### Introduction:

This 4x2 HDMI Matrix Switch is with 4 HDMI inputs and 2 HDMI outputs. It is a true matrix and can distribute any one of 4 sources to either of 2 displays, and can work as a splitter to show the same source on 2 displays simultaneously. Analog R/L audio and digital SPDIF audio can be extracted from HDMI signal. It supports 3D HDMI and 4KX2K.

### Important safety instructions

1. Use DC5V power supply only. Make sure specification matched if using adapters not supplied by factory.
2. Put this product in dry and ventilated place for normal heat dissipation.
3. Keep this product away from strong static and magnetic environment.

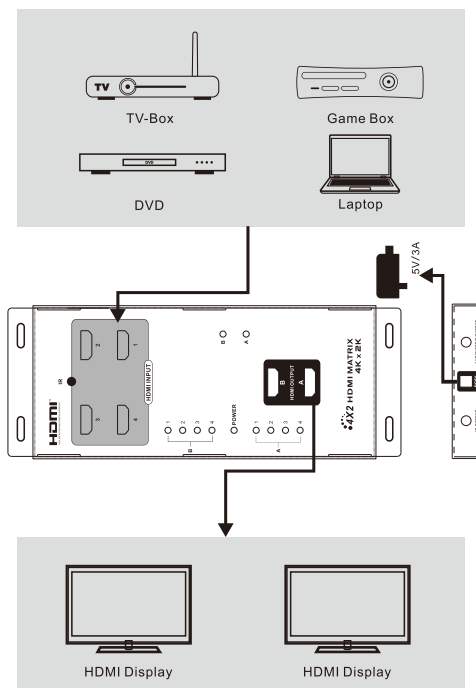
### Package contents

1. Product
2. Remote control
3. User manual
4. Power adapter 5V/3A
5. R/L audio+ SPDIF audio cable
6. Screws (to hang on wall)
7. IR extension receiver

### Installation requirement

1. HDTV or other display with HDMI port input.
2. HDMI video source, such as DVD, PS3, STB, PC etc.
3. High standard HDMI cable (can support 4K X 2K).

### Installation steps

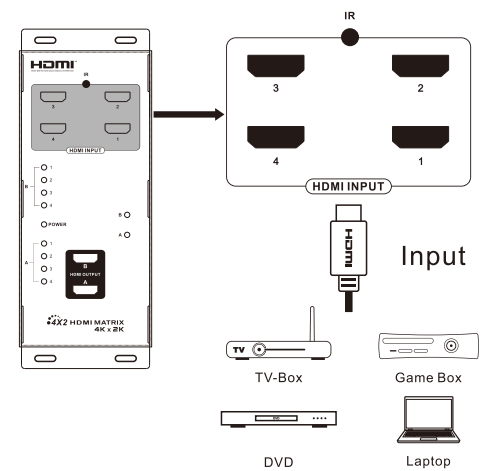


### Note:

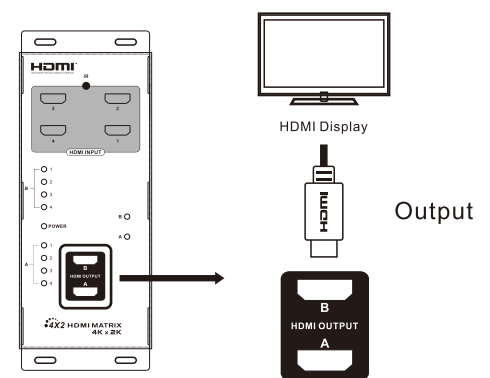
1. It requires that HDMI source (DVD, STP etc), HDMI cable and output display device all can support 4KX2K resolution if users need to output 4KX2K signal.
2. Do not plug and unplug HDMI cable or other cables while working.
3. Select the right HDMI input channel for displays.

### Operation notes

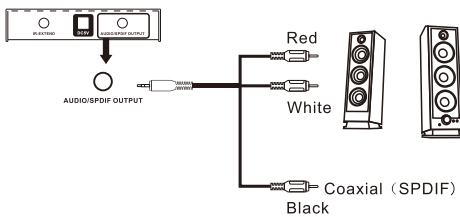
1. Connect HDMI source devices and this product HDMI inputs with HDMI cables.



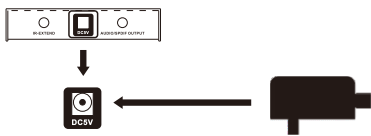
2. Connect this product output to HDMI displays with HDMI cables (select the right HDMI input channel for displays).



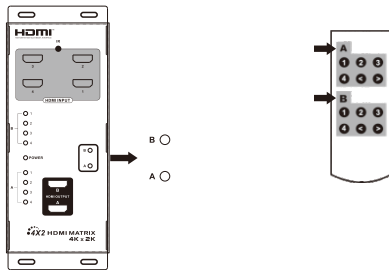
3. Connect R/L (red/white) and SPDIF audio (black) to earphone or other sound equipment with R/L audio and SPDIF cable.



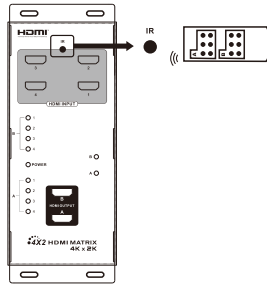
4. Power product on and it starts working.



5. Use remote control or the button on product to select any of the source devices as input.



6. Users can connect IR extension receiver to this product and switch the input signal by remote control while installing this product into a equipment cabinet.



### Trouble shooting

1.No image output.

- A. Check and make sure all the devices and cables are connected well.
- B. Check and make sure the HDMI display has been set up to the right channel.
- C. Check if the matched output indicator led lights on.
- D. Check if source device output HDMI signal correctly (if it is PC or laptop, needs to be set as mirror or extend output).

2.Output is unstable, splash screen, snowflakes or audio stuck.

- A. Check and make sure all the devices and cables are connected well.
- B. If need to transfer 4K X 2K signal, please use the HDMI cable supported 4K X 2K.

### Specification

Power supply	5V/3A
Input ports	HDMI X 4
Output ports	HDMI X 2
Power indicator led	Yellow LED X1
Signal indicator led	Blue LED X8

Frequency Range	25MHz - 340MHz
Max transmission rate	3.4G X 3= 10.2Gbps
Color depth	Supports 12-bit DeepFull HD, Full 3D and 4K x 2K video
Audio	Supports standard audio and DSD (Direct Stream Digital ) Audio and HD (HBR) Audio
HDMI resolution supported	480i@60Hz, 480P@60Hz, 576i@50Hz, 576P@50Hz, 720P@50@60Hz, 1080i@50@60Hz, 1080P@50@60Hz, 3D HDMI(720P@50@60Hz, 1080P@24Hz), 3840 X 2160P@24@25@30 Hz
Dimension	213 X 86 x 19 mm
Net weight	390 g
Color	Black
Working temperature	0~60°

### Disclaimer

The product name and brand name may be registered trademark of related manufactures. ™ and ® may be omitted on the user manual. The pictures in this user manual are just for reference. The terms HDMI, HDMI High-Definition Multimedia Interface, and the HDMI Logo are trademarks or registered trademarks of HDMI Licensing Administrator, Inc. We reserve the rights to make changes without further notice to a product or system described herein to improve reliability, function or design.

